



CRUSHPROOF® TUBING

IN-STOCK RUBBER SEED TUBES

OTHER SIZES AVAILABLE

TOP SELLING STRETCH TUBES



D132

Length: 9" to 21"
Overall ID: 1.5"
Cuff 1: 2.06" ID x 1.25" L
Cuff 2: 2.06" ID x 1.25" L
Convolutions: 32



AC12

Length: 9.5" to 26"
Overall ID: 1.25"
Cuff 1: 1.25" ID x 1.0" L
Cuff 2: 1.25" ID x 2.0" L
Convolutions: 42



D130

Length: 8.5" to 22"
Overall ID: 1.5"
Cuff 1: 1.5" ID x 1.38" L
Cuff 2: 2.06" ID x 1.5" L
Convolutions: 33



C122

Length: 8" to 25"
Overall ID: 1.5"
Cuff 1: 1.63" ID x 1.0" L
Cuff 2: 1.63" ID x 1.0" L
Convolutions: 34



SD50

Length: 17.5" to 51"
Overall ID: 1.25"
Cuff 1: 1.25" ID x 1.75" L
Cuff 2: 2.06" ID x 2.0" L
Convolutions: 85



SD50-R

Length: 11" to 36"
Overall ID: 1.25"
Cuff 1: 1.25" ID x 1.75" L
Cuff 2: Inserted Washer
Convolutions: 62



SD60-A

Length: 24.5" to 53"
Overall ID: 1.25"
Cuff 1: 1.25" ID x 1.75" L
Cuff 2: 2.06" ID x 2.5" L
Convolutions: 115



SD60-R

Length: 22" to 51"
Overall ID: 1.25"
Cuff 1: 1.25" ID x 1.75" L
Cuff 2: Inserted Washer
Convolutions: 116



U115E

Length: 14" to 30"
Overall ID: 1.25"
Cuff 1: 1.25" ID x 1.0" L
Cuff 2: 2.25" ID x 2.25" L
Convolutions: 60



U100

Length: 9.5" to 26"
Overall ID: 1.25"
Cuff 1: 2" ID cone x 1.75" L
Cuff 2: 1.38" ID x 1.0" L
Convolutions: 42



U140

Length: 9.5" to 26"
Overall ID: 1.25"
Cuff 1: 2" ID cone x 1.75" L
Cuff 2: 1.38" ID x 1.0" L
Convolutions: 42



SD55-R

Length: 15.5" to 48"
Overall ID: 1.25"
Cuff 1: 1.26" ID x 1.75" L
Cuff 2: Inserted Washer
Convolutions: 85

TOP SELLING TAPERED TUBES



TA17

Length: 17"
Top ID: 1.563"
Bottom OD: 1.25"



TA20

Length: 20"
Overall ID: 1.563"
Bottom OD: 1.25"



TA20C

Length: 20"
Overall ID: 1.563"
Bottom OD: 1.25" (notched)



TA2158

Length: 20"
Overall ID: 1.625"
Bottom OD: 1.25"



CRUSHPROOF TUBING COMPANY

Phone: 800-654-6858 or 419-293-2111

Fax: 419-293-2609

Email: contact49@crushproof.com

Location: 100 North Street McComb, Ohio 45858

crushproof.com

OR

SCAN THE QR CODE
FOR DIRECT ACCESS
TO OUR WEBSITE





ZEBRA SEEDER

PREMIUM AIR SEEDER HOSE



Our air seeder hoses set the standard in value and performance. Made from a proprietary High Density Polyethylene (HDPE) blend, they combine a fast-flowing, abrasion resistant, low coefficient of friction interior with a UV-resistant and durable exterior. They are also very flexible, making installation a breeze. All our common sizes can hold full vacuum and up to 70 psi working pressure, so they'll fit almost any application. We offer both a standard white hose with a black helix as well as custom color options to fit any design situation.

ID

All between 1"-4"

VACUUM

29.8 (Full)

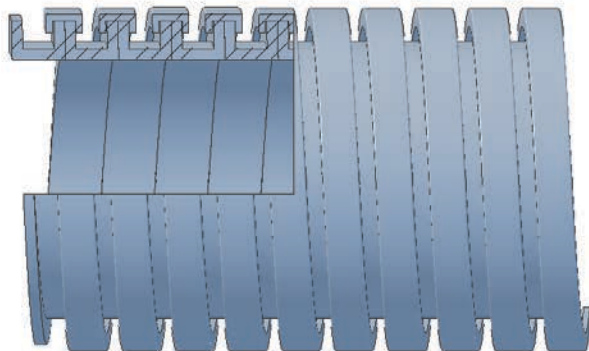
PRESSURE

70 psi

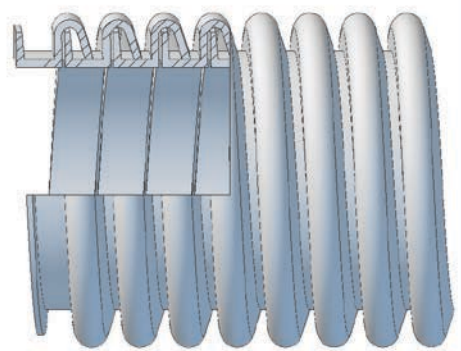
LENGTHS

50' or 100'

LARGE DIAMETER CONSTRUCTION



SMALL DIAMETER CONSTRUCTION



GT CRUSHPROOF TUBING COMPANY

Phone: 800-654-6858 or 419-293-2111

Fax: 419-293-2609

Email: contact49@crushproof.com

Location: 100 North Street McComb, Ohio 45858

crushproof.com

OR

SCAN THE QR CODE FOR DIRECT ACCESS TO OUR WEBSITE

